

Installation Options

Wall Installation



Floor Box Installation

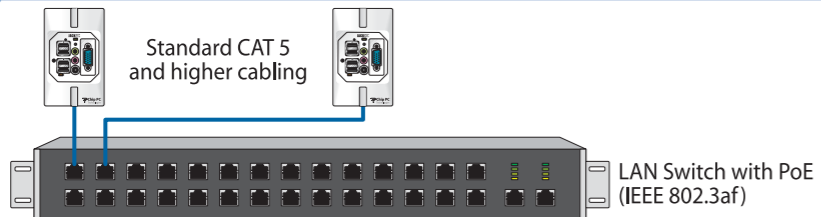


Furniture Installation

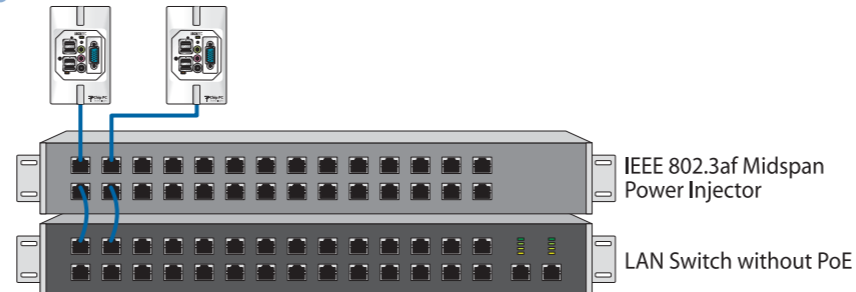


Power Options

Option 1 - PoE LAN Switch Available



Option 2 - Standard LAN Switch + Midspan PoE Injector



Option 3 - Standard LAN Switch + External Power Supply



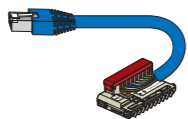
Accessories

Installation Options

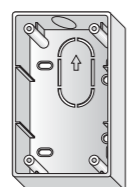
CPN02163
IDC Krone Termination Kit



CPN02164
RJ-45 Termination Kit

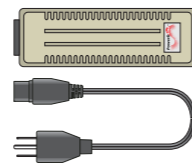


CPN02173
External Mounting Box - US



Power-over-Ethernet

CPN02221
Power-over-Ethernet
Midspan Injector - US
(Single Port, for Evaluation)

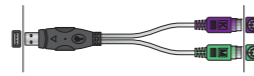


CPN02239
Power-over-Ethernet Tester



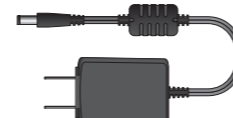
Ports Adapter Converters/Cables

CPN01487
USB to PS/2 Ports
Adapter

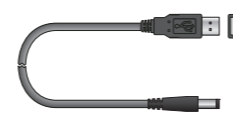


Powering

CPN02508
Power Supply, wall-mount,
US 100-240VAC, 5VDC, 2.4A



CPN03789
USB Power Cable - Single,
6 ft (1.8m)

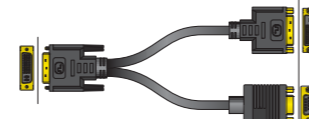


CPN03788
USB Power Cable - Dual,
6 ft (1.8m)



Y Cables & Converters for

CPN02176
Dual-screen
Y-Cable DVI-I to
DVI-D and VGA



CPN02159
DVI-I to VGA Adapter

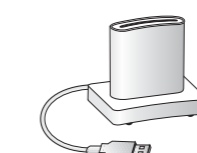


External USB Smart Card Readers

CPN02663
SCM SCR-3310 External USB
PC/SC Smart-Card Reader



CPN02664
SCM SCR-3311 External USB
PC/SC Smart-Card Reader

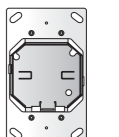


CPN01804
SCM SCR-335 External USB
PC/SC Smart-Card Reader



Miscellaneous

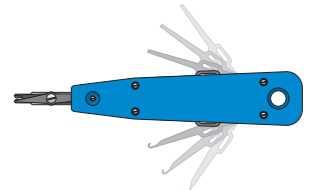
CPN02168
Housing - US



CPN02171
Extraction Tool, T-6



CPN02248
IDC Krone
Punch-Down Tool



CPN02289
Short LAN Jumper
Cable (two RJ-45)



CPN02434
RJ-45 to RJ-45 coupler
(Female-to-Female)



Jack PC - Installation Guide

Complete your SBC Solution by Using Xcalibur Global Management Software

Chip PC US
Toll Free: +1 866 674 1678
Tel: +1 972 827 0379
info.us@chippc.com

Chip PC HQ
Tel: +972 (0) 4 850 11 21
info@chippc.com

Chip PC Germany
Tel: +49 (0) 201 4513 100
Tel: +49 (0) 89 5171 7562
info@chippc.de

Chip PC UK
Tel: +44 (0) 870 606 1007
info@chippc.co.uk

Chip PC France
Tel: +33 (0) 6 11 42 07 84
info.fr@chippc.com



REV03.09
US / CMD04543

www.chippc.com

Chip PC Technologies - Making IT a Complete Solution



English



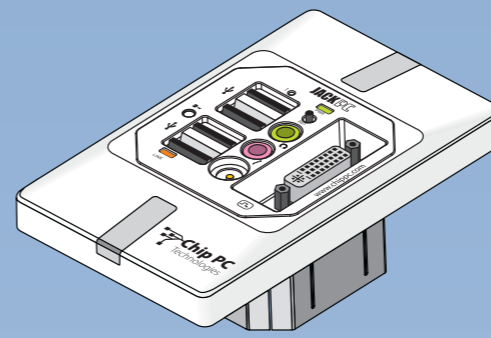
Chip PC Technologies

www.chippc.com

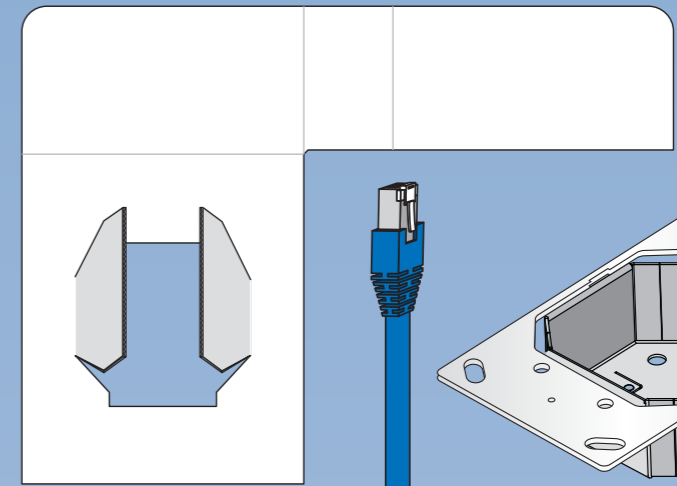
Chip PC Technologies

Box Content

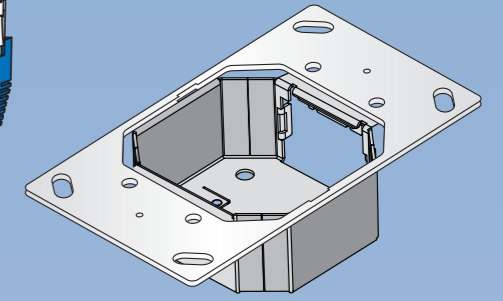
Unpack and identify the following parts:



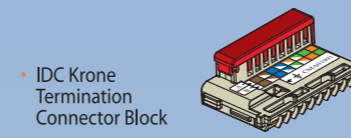
• Jack PC device



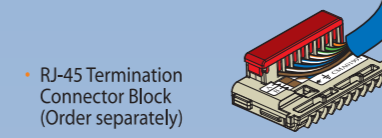
• Lower Cardboard Template that can be used for marking wall cutout in New Installation



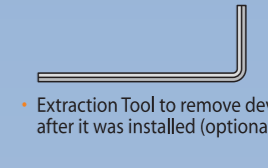
• Metal Housing for Jack PC



• IDC Krone Termination Connector Block



• RJ-45 Termination Connector Block (Order separately)



• Extraction Tool to remove device after it was installed (optional)

Existing Jack Installation

Tools you will need:

- Power-over-Ethernet Tester • Screwdriver/Electric screwdriver
- RJ-45 Termination Connector Block - to be purchased separately from Chip PC • Half-round File to trim wall cutout
- Cloth to clean Housing contacts • Extraction Tool to remove device after it was installed



Use Power-over-Ethernet tester to check existence of PoE in the Jack designated for installation.
Note: In case there is no PoE available, Jack PC can be powered by External power supply (see step 13).



Remove the existing LAN Jack from the wall. Separate the LAN Jack module from the front panel.



Pull out the LAN cable. Take the RJ-45 Termination Connector Block, which is not supplied in default packaging and needs to be purchased separately.



Connect the LAN jack and RJ-45 connector on the RJ-45 Termination Connector Block.



Insert the RJ-45 Termination Connector Block into the Housing bottom part until you hear a clicking sound indicating it has locked properly into place.



Place Housing inside the wall cutout. Trim wall cutout if necessary.

New Installation

Tools you will need:

- Drill with 65 mm (2.6 Inch) Hole Saw • Half-round File to trim wall cutout
- Cutter to remove LAN cable insulation • IDC Krone punch-down tool to secure wires • Cloth to clean Housing contacts
- Screwdriver/Electric screwdriver • Extraction Tool to remove device after it was installed



Use the lower Cardboard template supplied in packaging to mark the designated wall cutout for the Housing installation.



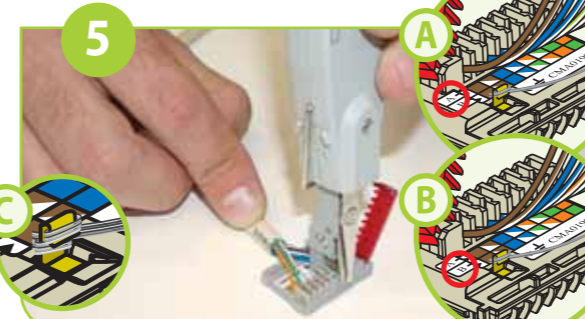
Drill the wall cut out at the designated location.
Warning!! Make sure not to drill next to electricity / telephone lines. Test for existence of power lines or enforcement beams prior to drilling the wall cutout.



Trim the cutout gently and check that the Housing fits in properly.



Pull out the LAN cable and remove 4cm/1.5 inch of its plastic insulation. Separate wire pairs by color.



Open the IDC Block red cover. Secure the wires with an IDC Krone tool, using the appropriate color scheme TIA568 version A or B (Pic. "A", "B"). When using a shielded LAN cable, wrap the Shield wire around the metal Tab (pic. "C").



Close the IDC Krone Termination Connector Block and insert it into the Housing bottom part until you hear a clicking sound indicating it has locked properly into place.



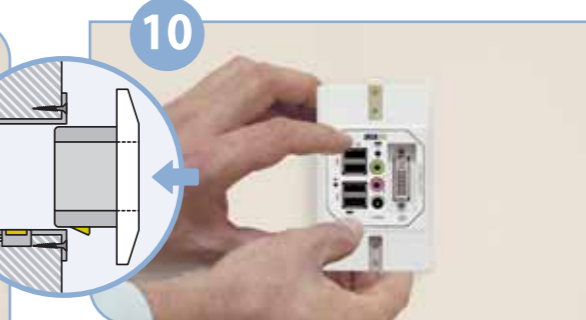
Make sure that the Housing is fully inserted, level-headed and Housing contacts are located at the bottom part as shown in picture. Secure with 4 screws.



Gently clean the Housing contacts from dust and other objects.



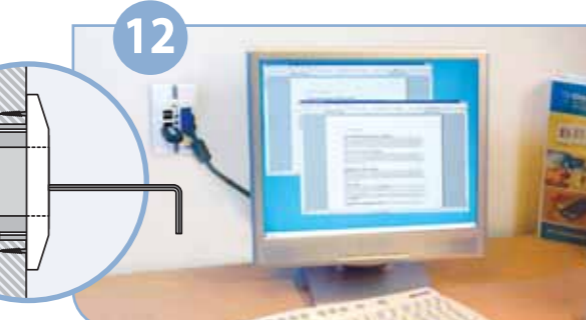
The Jack PC device should be inserted with contacts shown in picture facing downwards enabling direct contact with the Housing contacts.



Insert the Jack PC device into the Housing until you hear a clicking sound indicating the device has locked properly into place. Insert additional 2 screws to the frame and tighten.



Note: In case you need to remove device after it was installed, remove the 2 screws from frame and unlock device using the Extraction Tool turned clockwise.



Connect Keyboard, Mouse, Monitor and any other required peripheral to device ports.



Some models offer dual-screen support. In order to get this functionality, connect Y-cable to the DVI monitor port. The Y-cable is to be purchased separately as accessory from Chip PC.



To power the device from an external power source, connect Chip PC-supplied power supply to the DC power jack. The power supply is to be purchased separately as accessory from Chip PC.

Additional Jack PC technical documentation can be downloaded from: www.chippc.com